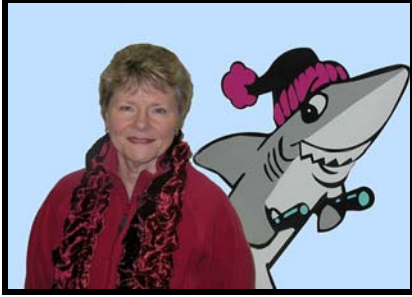




Clearwater/St. Pete Ski & Sports Club

Taos, New Mexico

February 20-27, 2010



Trip Leader: Helen Knox
Taos@snowshark.org
(727) 772-8621

Snakedance

Condominiums & Spa

Florida Ski Council Trip

Ski-In/Ski-Out Condos
Slopeside, 10 yards from Lift One

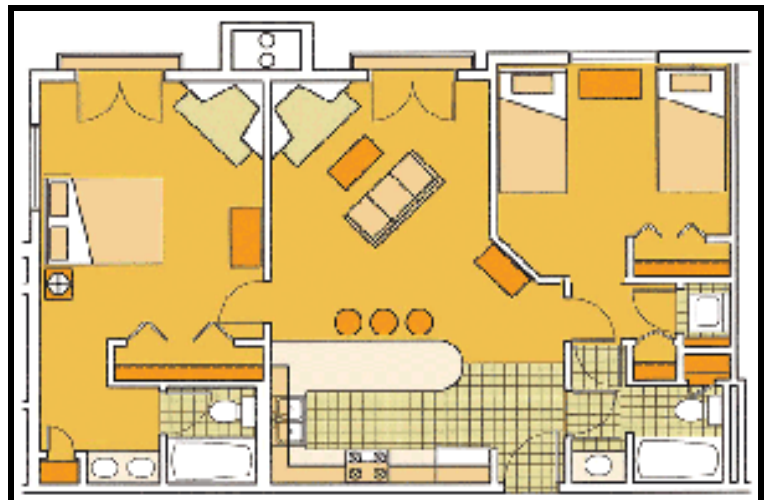
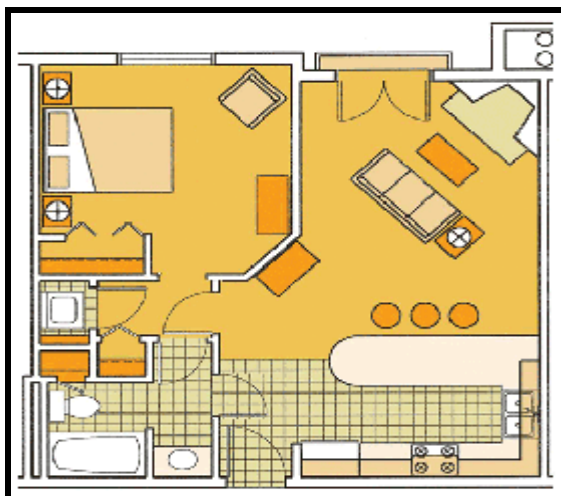
TAOS

Price: \$1,499 Per Person, based on 4 in a Condo

Ski with the Clearwater Snow Sharks and the Florida Ski Council at Taos Ski Valley in New Mexico. This trip starts at Tampa International Airport where your ski trip leader, Helen Knox, will be there to assist you. After arriving in Albuquerque, NM, a motor coach will transport our group to Taos from the airport with a stop for groceries. For those looking for adventure and some of the best powder out west, Taos is the trip for you. Taos is one of the world's most unique and picturesque ski resorts. Ski rental equipment and lift tickets will be offered at discounted FSC rates. In addition, Taos Ski Valley has a whole week of group ski lessons consisting of 2 hours of morning instructions every day for a special rate of **\$125**.

THE MOUNTAIN: Taos is one of the world's most unique and picturesque ski resorts. You can escape into the ancient cultures of the Southwest or explore an incredible mountain revered as one of the greatest ski destinations in the west. Taos is known for its outstanding expert terrain that consists of narrow steeps and chutes. The resort has the warm ambiance of a small European-style village rich with history which is nestled at the base of a great mountain with a superb ski school.

ACCOMODATIONS: Snakedance is a premier slope side property, and has just completed a \$3,500,000 renovation. The property is now made up of one, two and three bedroom suites. Each unit has a full kitchen with granite countertops, satellite TV, CD player, high speed internet access, and fireplaces. On-site amenities include a grocery, convenience store, award-winning restaurant and bar, spa, fitness and laundry facilities. **Your room rate includes a full breakfast daily.**





General Information:

Mountain Numbers:

- ❄ **Summit:** 11,819 feet
- ❄ **Lifts:** 12
- ❄ **Vertical Rise:** 2,612 feet

Trail System:

- ❄ **Skiable Terrain:** Over 1,294 acres
- ❄ **Longest Run:** 5.7 miles
- ❄ **Snowmaking:** 100%
- ❄ **Annual Snowfall:** 305 inches
- ❄ **Trails:** 110 named trails
- ❄ **Trail Classification:** 24% Beginner, 25% Intermediate, 51% Advanced

Number of occupants	1	2	3	4	5	6
Snakedance -1 bed/1 bath condo	\$2,265	\$1,499				
Snakedance -2 bed/2 bath condo			\$1,755	\$1,499	\$1,395	
Snakedance -3 bed/3 bath condo					\$1,655	\$1,499

All prices are per person. Accommodations are assigned in the order that deposits are received.

Trip Price: Price varies depending on how many are staying in your room. See chart above.

Price Includes: Round trip air to Albuquerque Airport, ground transportation from the airport to the condo, seven nights lodging, current taxes, pre-trip party, breakfast daily, club dinner, and all FSC dinners and socials. (Clearwater/St. Pete Ski Club and FSC membership fees are included with this price.)

Deposit: \$300 per person with trip application

Balance Due: **October 15, 2009** --Trip size is 36, so reserve early.

Cancellation: All cancellations must be received in writing by **October 15, 2009**. See cancellation policy on the back of the trip application.

Payment: Deposit and balance of trip costs can be paid by check or with a major credit card - (3% will be added for CC.) You will be billed later for final payment. At that time you will be able to order discounted group lift tickets, reserve ski-rentals, select optional activities, and purchase trip cancellation insurance. *TRIP PRICES ARE SUBJECT TO ANY NEW TAXES OR FEES IMPOSED BY EITHER THE GOVERNMENT, FUEL SURCHARGES, AIRPORT, AIRLINES OR AGENCIES INVOLVED.*

Trip Insurance: Trip insurance is recommended but is **NOT** part of the package price. Trip leader will be able to provide information on this purchase if you choose. Two good sites to consider for your insurance are: www.insuremytrip.com or www.travelprotectors.com

Please make checks payable to **Clearwater/St. Pete Ski Club** and mail to:
 Helen Knox
 2474 Saddlewood Lane
 Palm Harbor, FL 34685

For more information on booking this trip go to, www.snowshark.org or contact:

Helen Knox – Trip Leader: (727) 772-8621 or Holly Wagner: (727) 480-8193

e-mail: Taos@snowshark.org