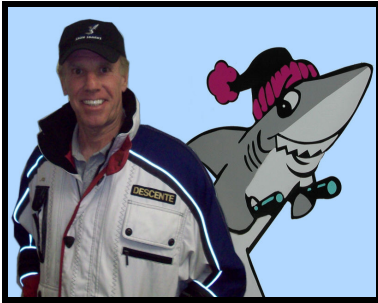




Clearwater/St. Pete Ski & Sports Club

Taos, New Mexico

January 7- 14, 2012



Trip Leader: Lou Bonsey
Taos@snowshark.org
 727-367-0124

THE INN AT SNAKEDANCE

ON-SLOPE AT TAOS SKI VALLEY

Ski In/Ski Out Condos
 Slopeside, 10 yards from Lift One

\$99 Ski Week Ski Lesson Package
 5 day lift Ticket \$275

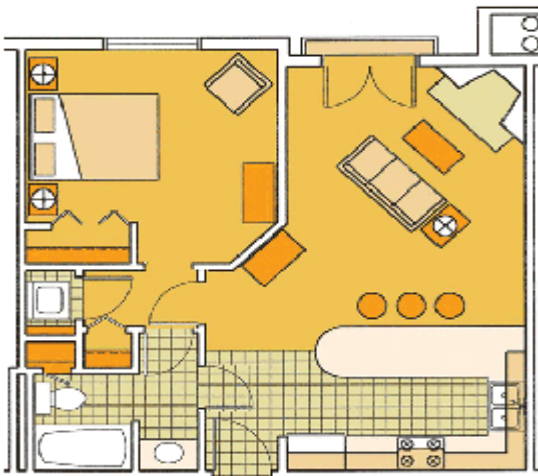
TAOS

Price: From \$1,275 per person, based on 4 in a unit. Have your own air? Take an air deduction of \$400

Ski with the Clearwater Snow Sharks at Taos Ski Valley in New Mexico. This trip starts at Tampa International Airport where your ski trip leader, Lou Bonsey will be there to assist you. After arriving in Albuquerque, NM, a motor coach will transport our group to Taos from the airport with a stop for groceries. For those looking for adventure and some of the best powder in the west, Taos is the trip for you. Taos is one of the world's most unique and picturesque ski resorts. Ski rental equipment and lift tickets will be offered at discounted rates. In addition, Taos Ski Valley has a special rate of \$99 for the ski week group lesson consisting of 2 hours of morning instructions every day.

THE MOUNTAIN: Taos is one of the world's most unique and picturesque ski resorts. You can escape into the ancient cultures of the Southwest or explore an incredible mountain revered as one of the greatest ski destinations in the west. Taos is known for its outstanding expert terrain that consists of narrow steeps and chutes. The resort combines the warm ambiance of a small European-style village nestled at the base of a great mountain, a superb ski school and an ambiance rich with history.

ACCOMODATIONS: Snakedance is a premier slope side property, and has just completed a \$3,500,000 renovation. The property is now made up of one, two and three bedroom suites. Each unit has a full kitchen with granite countertops, satellite TV, CD player, high speed internet access, and fireplaces. On-site amenities include a grocery, convenience store, award-winning restaurant and bar, spa, fitness and laundry facilities.





General Information:

Mountain Numbers:

- ❄ **Summit:** 11,819 feet
- ❄ **Lifts:** 13
- ❄ **Vertical Rise:** 2,612 feet
- ❄ **Skiable Terrain:** Over 1,294 acres
- ❄ **Snowmaking:** 100%

Trail System:

- ❄ **Longest Run:** 5.7 miles
- ❄ **Annual Snowfall:** 305 inches
- ❄ **Trails:** 110 named trails
- ❄ **Trail Classification:** 24% Beginner, 25% Intermediate, 51% Advanced

Number of occupants	1	2	3	4
1 Bedroom Condo	\$1,825	\$1,370		
2 Bedroom Condo			\$1,390	\$1,275
Studio (One Available)	\$1,370			

Air deduction of \$400 if you get your own air
Accommodations are assigned in the order that deposits are received

Trip Price: Price varies depending on how many are staying in your room. See chart above.

Price Includes:

- Round trip air between Tampa and Albuquerque Airport
- Ground transportation from the airport to the Snakedance condo's
- Seven nights lodging at the Snakedance
- Pre-trip get acquainted party
- Group welcome party
- Snakedance fleece vests
- Dinner at Marianni house
- Group farewell dinner
- Clearwater/St. Pete Ski Club membership included with this price

Deposit: \$300 per person with trip application

Balance Due: **October 15, 2011** -- trip size is 32, so reserve early.

Cancellation: All cancellations must be received in writing by **October 15, 2011**. See cancellation policy on the back of the trip application.

Payment: Deposit and balance of trip costs can be paid by check or with a major credit card - (3% will be added for CC.) You will be billed later for final payment. At that time you will be able to order discounted group lift tickets, reserve ski-rentals, select optional activities, and purchase trip cancellation insurance. *TRIP PRICES ARE SUBJECT TO ANY NEW TAXES OR FEES IMPOSED BY EITHER THE GOVERNMENT, FUEL SURCHARGES, AIRPORT, AIRLINES OR AGENCIES INVOLVED.*

Trip Insurance: Trip insurance is recommended but is **NOT** part of the package price. Trip leader will be able to provide information on this purchase if you choose. Two good sites to consider for your insurance are:

www.insuremytrip.com or www.travelprotectors.com

Please make checks payable to **Clearwater/St. Pete Ski Club** and mail to:

Lou Bonsey
26 Paradise Lane
Treasure Island, FL 33706

For more information on booking this trip go to www.SnowShark.org or contact:

Lou Bonsey Trip Leader: 727-367-0124 or e-mail Taos@SnowShark.org